







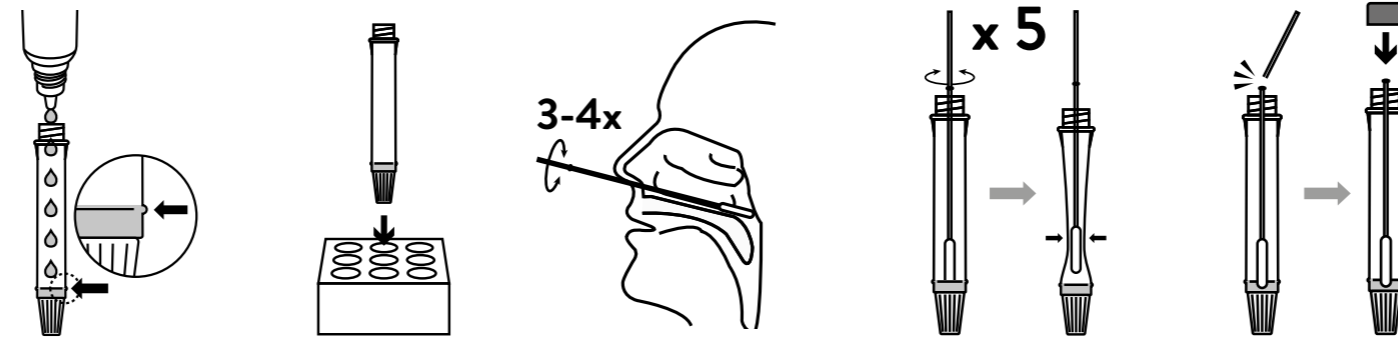


REF 41FK10

### TEST PROCEDURE

- 1 Hold the buffer bottle vertically and fill the extraction tube with buffer fluid until it flows up to the Fill-line of the extraction tube (300µl).
- 2 Place the extraction tube in the tube rack.
- 3 Tilt the patient's head back. Insert the swab through the nostril. Gently rub and roll the swab, 3-4 times. Leave the swab in place for several seconds. Slowly remove swab.
- 4 Insert the swab specimen in the extraction tube. Swirl the swab tip in the buffer fluid inside the extraction tube, pushing into the wall of the extraction tube at least five times and then squeeze out the swab by squeezing the extraction tube with your fingers.
- 5 Break the swab at the breakpoint and close the cap of extraction tube.

**Caution:** If the amount of buffer is excessive or insufficient, an improper test result may occur.



# Panbio™ COVID-19 Ag Rapid Test Device (NASOPHARYNGEAL)

In vitro diagnostic rapid test for qualitative detection of SARS-CoV-2 antigen (Ag)

### PREPARATION

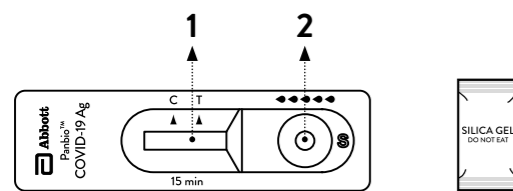
- 1 Allow all kit components to reach a temperature between 15-30°C prior to testing for 30 minutes.  
**Note:** Healthcare professionals should comply with personal safety guidelines including the use of personal protective equipment.

- 2 **Open the package and look for the following:**
  1. Test device with desiccant in individual foil pouch
  2. Buffer
  3. Extraction tube
  4. Extraction tube cap
  5. Positive control swab
  6. Negative control swab
  7. Sterilized nasopharyngeal swabs for sample collection
  8. Tube rack
  9. Quick reference guide (Nasopharyngeal)
  10. Instructions for use

- 3 Carefully read these instructions prior to using Panbio™ COVID-19 Ag Rapid Test Device kit.

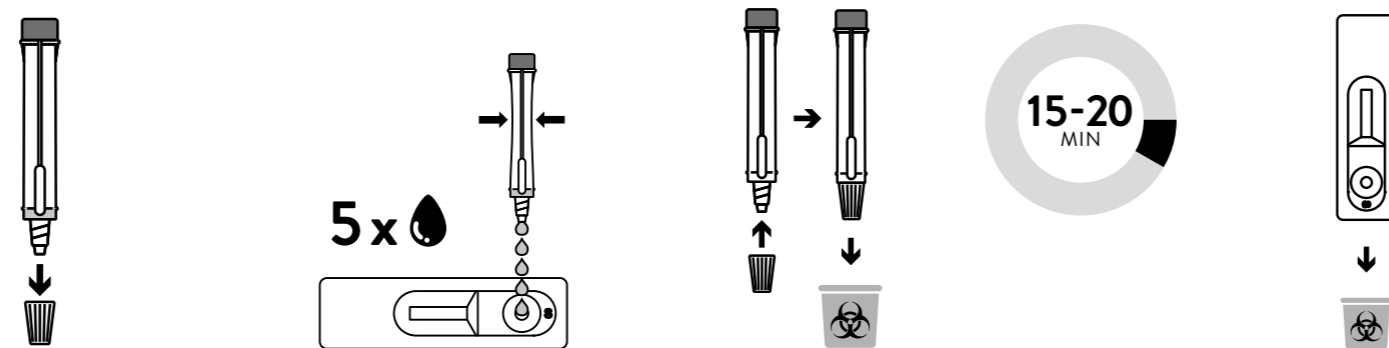
- 4 Look at the expiration date of the kit box. If the expiration date has passed, use another kit.

- 5 **Open the foil pouch and look for the following:**
  1. Result window
  2. Specimen well
Then, label the device with the patient identifier.



•••••: 5 drops of the extracted specimen

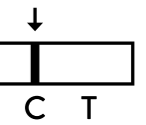
- 6 Open the dropping nozzle cap at the bottom of the extraction tube.
- 7 Dispense 5 drops of extracted specimens vertically into the specimen well (S) on the device. Do not handle or move the test device until the test is complete and ready for reading.  
**Caution:** Bubbles that occur in the extraction tube can lead to inaccurate results. If you are unable to create sufficient drops, this may be caused by clogging in the dispensing nozzle. Shake the tube gently to release the blockage until you observe free drop formation.
- 8 Close the nozzle and dispose of the extraction tube containing the used swab according to your local regulations and biohazard waste disposal protocol.
- 9 Start timer. Read result at 15 minutes. Do not read results after 20 minutes.
- 10 Dispose of the used device according to your local regulations and biohazard waste disposal protocol.



### TEST INTERPRETATION

#### NEGATIVE

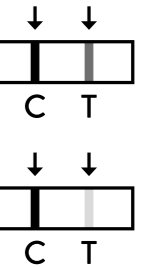
The presence of only the control line (C) and no test line (T) within the result window indicates a negative result.



#### POSITIVE

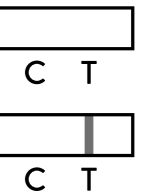
The presence of the test line (T) and the control line (C) within the result window, regardless of which line appears first, indicates a positive result.

**Caution:** The presence of any test line (T), no matter how faint, indicates a positive result.



#### INVALID

If the control line (C) is not visible within the result window after performing the test, the result is considered invalid. Instructions may not have been followed correctly. It is recommended to read the IFU again before re-testing the specimen with a new test device.



### GLOSSARY OF SYMBOLS

Temperature limitation	Lot Number	Manufacturer
For in vitro diagnostic use only	Catalog Number	Date of manufacture
Do not reuse	Consult instructions for use	Keep away from sunlight
Use By	Keep dry	Caution
Contains sufficient for X tests	Biological Risks	Do not use if package is damaged
CE mark	Sterilized using ethylene oxide	
Do not re-sterilize	Sterilized using irradiation	



Panbio™

# COVID-19 Ag RAPID TEST DEVICE (NASOPHARYNGEAL)

QUICK REFERENCE GUIDE

REF 41FK10

DE

Kurzanleitung  
(NASOPHARYNGEAL)

Technischer Support:  
Abbott.com/POCT

ES

Guía de referencia rápida  
(NASOFARINGEO)

Asistencia técnica:  
Abbott.com/POCT

FR

Guide de référence rapide  
(Prélèvement Nasopharyngé)

Support Technique ;  
Abbott.com/POCT

IT

Guida Rapida di Riferimento  
(NASOFARINGEO)

Supporto Tecnico  
Abbott.com/POCT

PT

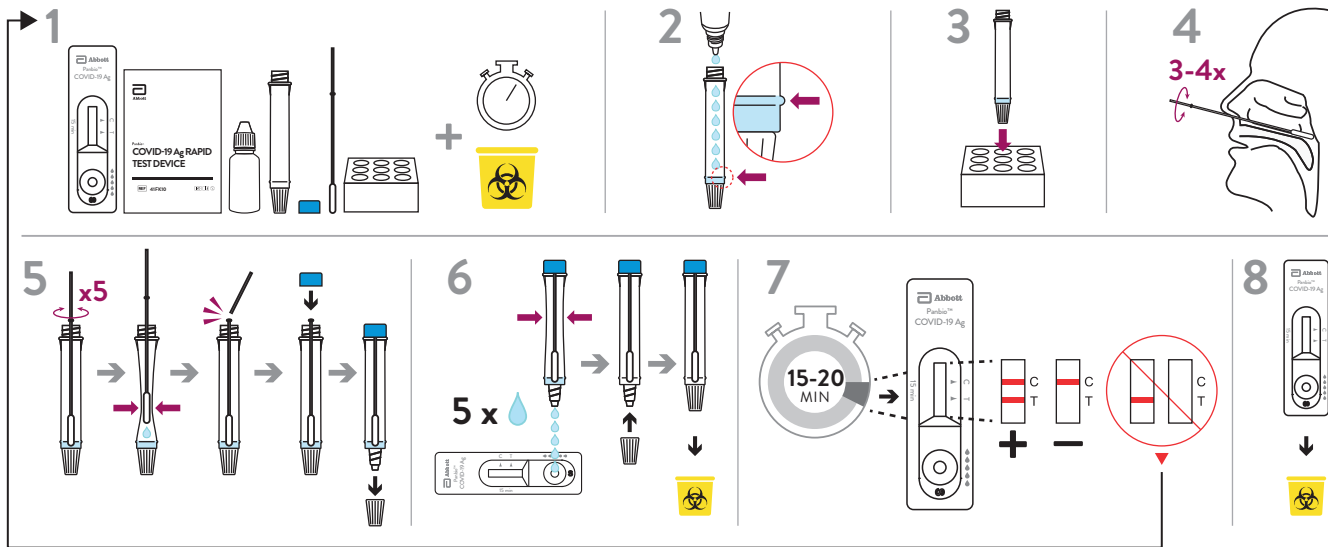
Guia de referência rápida  
(NASOFARINGEA)

Suporte técnico:  
Abbott.com/POCT

RU

Краткое руководство  
(назофарингеальный тампон)

Техническая поддержка:  
Abbott.com/POCT



TECHNICAL SUPPORT: ABBOTT.COM/POCT

© 2020 Abbott. All rights reserved. All trademarks referenced are trademarks of either the Abbott group of companies or their respective owners.

41FK10-07-QRG-A0